



+ PHEV2 Module

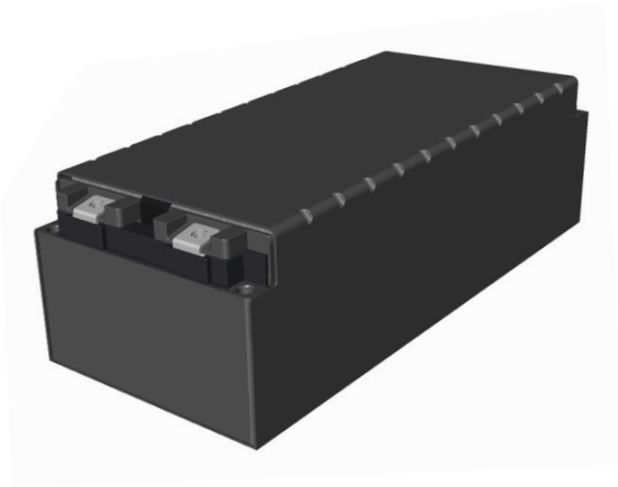
Nickel Manganese Cobalt Technology

A123’s NMC technology provides our modules with superior cycle life and excellent abuse tolerance. Utilizing A123’s proven hardware architecture, we are able to build upon existing framework and easily configure with NMC technology in an efficient design that’s easily scalable to any automotive specification across the world.



Applications

- + EV & PHEV Commercial Vehicles
- + EV & PHEV Passenger Vehicles
- + Auxiliary Power



Features

- Integrated mounting features to support both horizontal and vertical module orientations
- Thermal management interface on 3 sides to support multiple orientations or multiple surfaces for thermal management
- Integrated cell voltage and temperature sensing and on-board MBB (Module Balancing Board) with CAN communications to the system level application

Product Specifications

External Dimensions (mm)	355 x 151 x 108
Mass (kg)	10.4
Cell Capacity	37Ah
Cell Dimensions (mm)	308 x 11.3 x 102
Volume	5.8L
Mounting	Vertical, M8
Configurations	12S1P, 6S2P, 4S3P
Cooling	Bottom Side, Cold Plate
Cell Type	Li ion, Pouch cell, Opposing Tabs